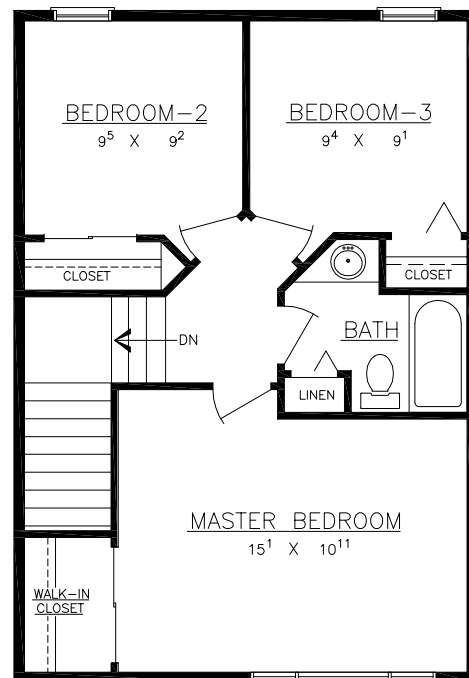
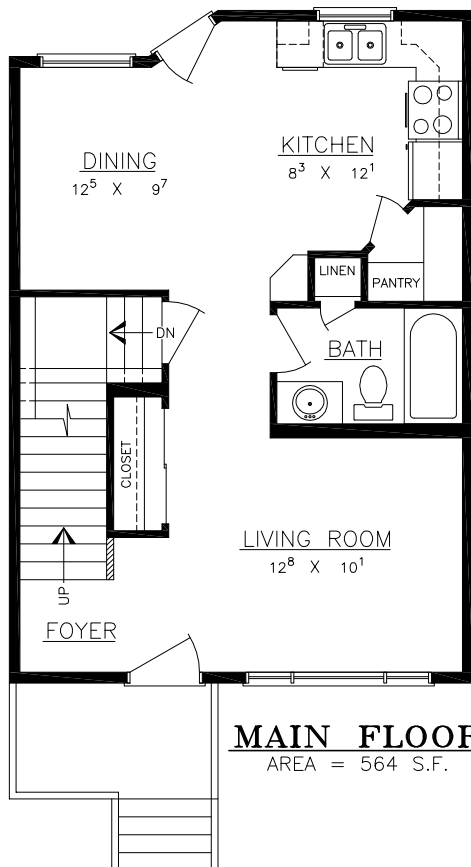




FRONT ELEVATION



SPECIFICATIONS: 15-018P

STYLE: TWO-STORY

AREA: 1144 S.F.

OVERALL SIZE: 20'-0" x 29'-0"

FEATURES:

- 3 BEDROOMS
- MASTER BEDROOM WALK-IN
- CEILING ARE 9' ON MAIN FLOOR AND 8' ON SECOND.